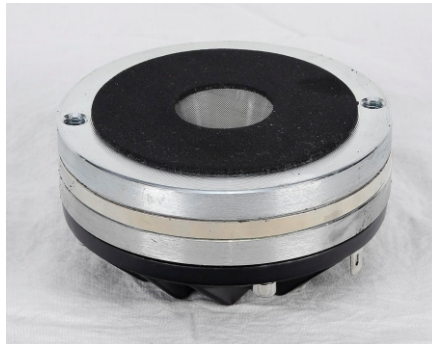


4545ND

- 120 W Continuous program power
- 1500-20 KHz Frequency range
- 44.4mm Voice coil
- 108 dB Sensitivity
- Optimized magnet and FEA analyse



SPECIFICATIONS PARAMETERS

Throat Diameter	25.4mm
Nominal Impedance	8ohm
Program Power	120 watts
Nominal Power	60 watts
Sensitivity	108dB
Frequency Range	1500-20 KHz
Voice-coil Diameter	44.4 mm

MOUNTING & SHIPPING INFORMATION

Overall Diameter	85	mm/inch
Mounting holes No.	M6*2	screw
Mounting Bolt Dia.	76/3	mm/inch
Overall Depth	49/1.92	mm/inch
Speaker Weight	0.93/2.05	kg/lbs
Packing Size	98*98*70	mm
Total Weight	1/2.20	kg /lbs

